



Things to see and do at Alexandra Palace



1. The East Court

In the East Court there is:



- the theatre



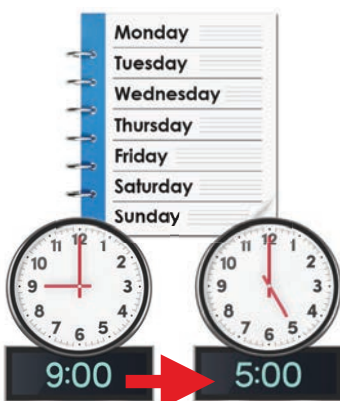
- the ice rink



- a café called the **5 star café**



- the **Visitor Services desk**. This is where you can go if you need help or information



The East Court is open every day from 9am to 5pm.



There is a ramp on one side of the East Court main entrance. This is for people who find it hard to use steps.



How to get here

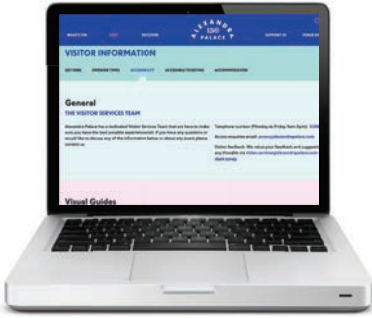
You can get here by car or **public transport**. **Public transport** is things like buses or trains.



The **W3** bus stops outside the entrance to Alexandra Palace.



The East Court car park is open from 7am until late at night.



We have an easy read booklet with more information about getting here on our website:

www.alexandrapalace.com/visitor-information/accessibility/



Toilets

There are toilets in the East Court.



These toilets are for everyone to use.



We also have an **accessible toilet**. This is a toilet with more space and handrails in it.



You can change your baby's nappy in the accessible toilet.



The Visitor Services desk

The staff who work here wear blue clothes. They are happy to help you. Staff can:



- answer your questions
- tell you where things are



- sell you tickets and other things to do with Alexandra Palace



- give out hearing loops to people who use hearing aids



We have a **drop down service** at the Visitor Service desk. This is a part of the desk that is lower down.

This makes it easier for people who use a wheelchair to get served.



5 star café

The café sells drinks, sweets and hot food.



There are lots of seats inside the East Court for everyone to use.



The Creative Learning Pavilion

This is a place where people can come to learn and enjoy new things.

For example:



- making films



- acting



- using **technology**. This is things like computers and tablets

2. The Ice Rink

The ice rink is at one side of the East Court main entrance.



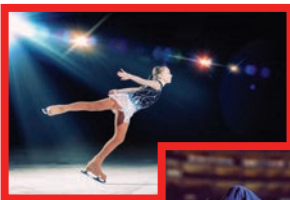
We have different activities at the ice rink. Things like:



- public ice skating **sessions**. These are times when anyone can come and skate



- ice skating **lessons**. This is when staff teach you how to skate



- **events**. This might be things like a show or an ice hockey game



- birthday parties for children



When you buy a ticket for public ice skating, you can borrow skates for free.



If you do not want to skate, we have seats where you can watch.



There are toilets at the ice rink. The toilets are next to the desk where you borrow skates from.



We have an easy read booklet with more information about the ice rink on our website:

www.alexandrapalace.com/visitor-information/accessibility/

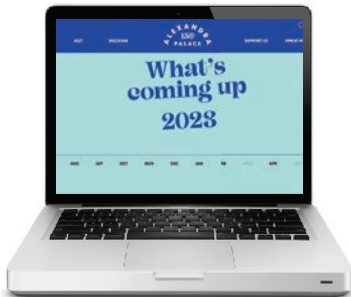
3. The theatre



Our theatre is very old. It first opened in 1875.



We put on different events in the theatre. Things like shows, music and talks.



You can find a list of events on our website:

www.alexandrapalace.com/whats-on/



4. Pitch and Putt

Pitch and Putt is where people come and play golf for fun.

You can buy Pitch and Putt tickets:



- online on our website:
www.alexandrapalace.com/pitch-putt/book-now/



- at the visitor services desk in the East Court



- at the Pitch and Putt hut. This is next to the Pitch and Putt golf course

Pitch and Putt is not open everyday. It is open on:



- weekends



- **bank holidays.** A **bank holiday** is a day when banks and lots of businesses are closed



- the school holidays in July and August



10:00

Open



Closed

Pitch and Putt is open from 10am until it starts to get dark at night.



There is a café in the Pitch and Putt hut that sells drinks and snacks.

5. The Phoenix Bar

We say this as **fee-nix bar**.

The Phoenix Bar is near the Palm Court entrance.



The bar opens at 11am every day.



You can buy drinks, pizzas and hot sandwiches from the bar.



You can sit inside or outside to eat and drink.

6. The boating lake, parks and cafés



You can borrow a boat to go on the lake.



You can also go fishing.



You can pay to borrow a boat in the **Boating Lake café**.



The Boating Lake café opens at 10am everyday.



You can buy food, snacks and drinks in the café.



There are toilets on one side of the café.



The park

The park is very big and is open to everyone.



We have a children's play park with:

- swings and slides

and



- a place for children to play basketball and football



We also have a skate park with ramps for skateboarding. Anyone can use the skate park.



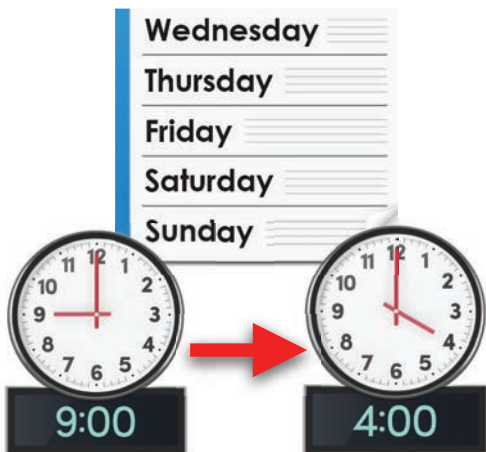
Children and adults can have skateboarding lessons here.



The **Grove café** is in the park.



You can buy sandwiches, drinks and cakes from the café.



The Grove café is open on Wednesday to Sunday from 9am to 4pm.

7. Go Ape

Go Ape is an adventure course in the trees. You climb around on things like:



- wobbly bridges



- ropes and ladders



- **zipwires** to slide down

Level 1

Level 2

Level 3



There are 3 different courses at Go Ape.

Level 1 is the easiest. Level 3 is the hardest.

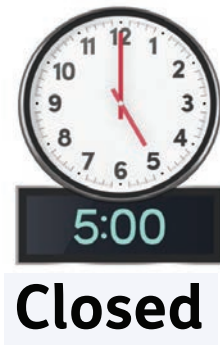


Go Ape opens:

- at 9am on Saturday, Sunday, Monday and Tuesday



- at 10 am on Wednesday, Thursday and Friday



It closes at 5pm everyday.

8. The Great Hall



We put on concerts and other events in the Great Hall.



Lots of people can come to these events.



We have a famous organ in the Great Hall. It is very old.



Sometimes we have events where people can come and listen to the organ.

9. Palm Court



Palm Court is another entrance into Alexandra Palace.

Monday
Tuesday
Wednesday
Thursday
Friday
Saturday
Sunday



It is not open every day. We only open it for special events or concerts.

Coming to an event at Palm Court

We might ask to check your bags and pockets before you come in.



This is to make sure you are not bringing anything dangerous into the building.